



ESAT

EDUCATIONAL  
SERVICES  
AND TESTING





# Contents

<b>About ESaT Examinations</b>	<b>4</b>
.....	
<b>Overview for School and Universities</b>	<b>5</b>
Levels	
Comparison Table	
.....	
<b>Why use ESaT Qualifications?</b>	<b>6</b>
.....	
<b>Exam format and content</b>	<b>8</b>
.....	
<b>Quality and security</b>	<b>13</b>
Further security and fraud protection measures	
Quality assurance	
.....	
<b>Reporting of exams results</b>	<b>14</b>
Certificate	
Overall grade	
Individual skill score	
Extended certification	
The ESaT Assessment Scoring Scale	
.....	
<b>Security features</b>	<b>16</b>
For how long are ESaT certificates valid?	
.....	
<b>Verification of Results</b>	<b>18</b>
.....	
<b>Accepting ESaT qualifications</b>	<b>18</b>
Global Recognition	
.....	
<b>Contact Us</b>	<b>20</b>



# About ESaT Examinations

ESaT has developed and produced a comprehensive range of qualifications for learners and teachers of English. We have over 200 centres which offer English qualifications for both Juniors (jTELS) and Adults (TELSa), from Beginner to Proficiency level, through a progressive programme.

The six levels are aligned to the Common European Framework for Reference. All qualifications, from jTELS/TELSa A1 to TELSa C2, are fully accredited by the Maltese regulating body, the NCFHE (National Commission for Further and Higher Education). This ensures recognition both in EU states and internationally.

TELSa C2	High Advanced-Proficiency
TELSa C1	Advanced
jTELS/TELSa B2	Upper Intermediate
jTELS/TELSa B1	Intermediate
jTELS/TELSa A2	Elementary-Pre-Intermediate
jTELS/TELSa A1	Starter-Elementary

For more information about ESaT Examinations, please go to [www.esatmalta.org](http://www.esatmalta.org)

Should you have any queries or comments regarding the examinations, please write to:  
**Educational Services and Testing Ltd**  
Level 2 - The Forum  
Constitution Street,  
Mosta MST 9064  
MALTA

Email us on:  
[info@esatmalta.org](mailto:info@esatmalta.org)





# Overview for Schools and Universities

ESaT OFFERS A RANGE OF LEVEL-BASED  
ENGLISH LANGUAGE QUALIFICATIONS.

ESaT qualifications are aligned to the Common European Framework of Reference for Languages (CEFR)\* as well as the Maltese Qualifications Framework (MQF)\* which is aligned to the European Qualifications Framework (EQF).

The following chart illustrates how ESaT qualification levels relate to the CEFR and MQF/EQF levels.

## Comparison Table

ESaT	MQF/EQF	CEFR	Cambridge English	IELTS
TELSa C2	LEVEL 4	C2 MASTERY	200+	8.0–9.0
TELSa C1	LEVEL 4	C1 EOP	180–200	7.0–7.5
jTELS/TELSa B2	LEVEL 4	B2 VANTAGE	160–180	6.0–6.5
jTELS/TELSa B1	LEVEL 3	B1 THRESHOLD	140–160	4.0–5.5
jTELS/TELSa A2	LEVEL 2	A2 WAYSTAGE	120–140	3.0–3.5
jTELS/TELSa A1	LEVEL 1	A1 BREAKTHROUGH	100–120	1.0–2.5
Young Learner Tests				

\*Further information about the Common European Framework of Reference for Languages (CEFR) is available on the Council of Europe website at [http://www.coe.int/t/dg4/linguistic/default\\_en.asp](http://www.coe.int/t/dg4/linguistic/default_en.asp)

\* Further information about the Malta Qualifications Framework (MQF) is available on the NCFHE website at <https://ncfhe.gov.mt/en/Pages/MQF.aspx>



# Why use *ESaT* qualifications?

ESaT QUALIFICATIONS ARE SUITABLE FOR USE BY FURTHER AND HIGHER EDUCATION INSTITUTIONS AS ENTRANCE REQUIREMENTS.

## **A reliable assessment of a learner's English language skills**

ESaT qualifications offer a comprehensive assessment of the 4 language skills: Reading, Writing, Listening and Speaking, providing a reliable indicator of language ability.

Achievement at a higher level is often the result of many years of study. Typically, candidates at this level will have started studying English at a very young age, gradually working their way up the various levels, incrementally and confidently increasing their skills and knowledge of the language.

ESaT qualifications provide challenging but attainable targets every step of the way, encouraging candidates as they move up the levels to become confident and proficient users of the language.

## **Secure and fair exams**

Our authorised centres are regulated by a code of practice to ensure the highest level of security during examination sessions as well as equal and fair treatment of all candidates.

## **Transparent and informative results**

A consistent scoring system across all levels makes it easy

for an institution to establish entrance requirements and provides accurate information about each language skill.

ESaT certificates provide an overall aggregate grade for the Speaking, Reading, Writing and Listening skills. Grades and performance descriptors for each of these skills provide precise information across all areas.

All the information about a candidate's language ability in each separate skill is displayed on the certificate, with no separation of certificate and analysis of results.









# *Exam format and content*





AT ESAT WE BELIEVE  
IN EMPOWERING  
LEARNERS.  
BY OFFERING  
REALISTIC GOALS,  
WE HELP TO FOSTER  
A CULTURE THAT,  
THROUGH HARD  
WORK, EVERYBODY  
CAN ACHIEVE  
SUCCESS.

*NOTE: The Speaking session is recorded  
and then moderated centrally.*

#### jTELS/TELSa Levels A1 to B1 (MQF levels 1-3)

##### **The Use of English section ► 20%**

This section consists of 6 vocabulary and grammar tasks.

##### **The Writing section ► 20%**

This section consists of 2 tasks which test the candidates' ability to write different types of text including essays, letters, emails and messages. At B1 level, candidates are also assessed through transformation tasks.

##### **The Reading section ► 20%**

The two reading tasks in this section test the candidates' ability to deal confidently with different types of written discourse, including narrative and short articles, as well as their ability to control vocabulary, and, at Level B1, to focus on coherence and cohesion devices in order to recreate a gapped text.

##### **The Listening section ► 20%**

The candidates' ability to understand and process English in a range of spoken situations, such as monologues, dialogues, announcements and recorded messages is assessed. At B1 level, the ability to understand TV news items is also assessed, as are candidates' note-taking skills.

#### **TOTAL OF 1 HOUR 35 MINUTES**

##### **Speaking tasks ► 20%**

Candidates are tested on their ability to communicate effectively in face-to-face conversation with an assessor and one other candidate. They are also expected to speak at some length about a given topic, setting or picture, and to take part in a short discussion.

#### **TOTAL OF 20 MINUTES**





#### jTELS/TELSa Levels B2 (MQF level 4)

##### **The Use of English section ► 20%**

This section consists of 5 tasks targeting vocabulary and other lexical structures, as well as grammatical structures and textual cohesion.

.....

##### **The Writing section ► 20%**

This section tests the candidates' ability to write different types of text with a very high level of self-awareness and organisation. It also tests their ability to use sophisticated linguistic markers to help the reader understand significant points and opinions, and substantiate points with clearly linked supporting evidence where necessary.

.....

##### **The Reading section ► 20%**

The Reading section tests the candidates' ability to understand, process and deal confidently with different types of written discourse from different genres, cultures and eras including fiction and non-fiction. A high level of awareness of nuance, idiom, and collocation is necessary as is a confident ability to deal with multiple synonyms in a semantic field.

.....

##### **The Listening section ► 20%**

This section tests the candidates' ability to understand and process English in a range of spoken situations such as monologue, dialogues, lectures, announcements, news stories, and recorded messages. Notetaking skills are also assessed. At this level, key emphasis is on facts and information, with some focus, also, on candidates' ability to process opinions and inference.

**TOTAL OF 2 HOURS 55 MINUTES**

##### **Speaking tasks ► 20%**

Candidates are tested on their ability to communicate effectively in face-to-face conversation with an assessor and one other candidate. Tasks include long individual turns relating to material provided by the examiner, as well as discussion and negotiation.

**TOTAL OF 20 MINUTES**

#### TELSa Levels C1 to C2 (MQF Level 4)

##### **The Reading & Language Use section ► 25%**

This section tests the candidates' control of vocabulary and other lexical structures, as well as complex grammatical structures. It also tests their understanding of textual cohesion and their ability to understand, process and deal confidently with different types of written discourse from various genres, cultures and eras, including fiction and non-fiction.

A high level of awareness of nuance, idiom and collocation is necessary as is a confident ability to deal with multiple synonyms in a semantic field as well as complex structures.

.....

##### **The Writing section ► 25%**

This section tests the candidates' ability to write different types of text with a very high level of self-awareness and organisation, as well as interpretation, where necessary. The Writing section also tests candidates' ability to use sophisticated linguistic markers to help the reader understand significant points and opinions, and to substantiate points with clearly linked supporting evidence where necessary.

.....

##### **The Reading section ► 25%**

This section tests the candidates' ability to understand and process English in a range of spoken situations such as monologue, dialogues, lectures, announcements, and other genres.

At these high levels, candidates are assessed on their ability to follow and understand information, nuance and inference, as well as their capability to process opinions and inference. Their notetaking skills are also assessed.

**TOTAL OF 3 HOURS 10 MINUTES**

##### **Speaking tasks ► 25%**

Candidates are tested on their ability to communicate effectively in face-to-face conversation with an assessor and one other candidate. Tasks include long individual turns relating to material provided by the examiner, as well as discussion and negotiation.

**TOTAL OF 20 MINUTES (max.)**





AT ESAT WE  
BELIEVE IN A  
PROGRESSIVE  
AND  
MANAGEABLE  
APPROACH TO  
LEARNING, AS  
WELL AS THE  
ASSESSMENT OF  
CANDIDATES'  
LEVEL OF  
ENGLISH.





# Quality and security

PROGRAMMES AND TESTS ARE DESIGNED TO MOTIVATE AND ENCOURAGE LEARNERS TO FULFILL THEIR POTENTIAL.

The quality and security of the assessments are of paramount importance to ensure that all institutions and stakeholders have the necessary confidence in the assessment results and that these are an objective and reliable reflection of a candidate's ability in English.

All the processes that cover test development and production, as well as all marking, results administration and awarding of qualifications are securely managed centrally at ESaT headquarters.

All ESaT qualifications, from jTELS/ TELSa A1 to TELSa C2, are NCFHE accredited and linked to the Maltese and European Qualifications Framework (MQF and EQF).

This accreditation ensures that ESaT qualifications are quality controlled to the highest standards and recognised by government institutions and education departments internationally.

## **FURTHER SECURITY AND FRAUD PROTECTION MEASURES**

- Assessment material is handled under secure conditions.
- ESaT authorised centres follow a code of practice to safeguard the security of the whole testing process, from registration to the reporting of results.
- There is no possibility of conflict of interest arising in the marking of the scripts as no marking is done by ESaT centres. All scripts are returned to ESaT headquarters and allocated to examiners at random.
- Speaking is initially assessed locally through face-to-face interviews with fully trained oral examiners. All oral examination sessions are recorded; recordings are sent to ESaT headquarters with the examiners' notes and assessment sheets for double marking. Only after this process is completed are the final grades allocated.

## **QUALITY ASSURANCE**

ESaT systems and processes for designing, developing and delivering qualifications adhere strictly to the specifications set by the NCFHE.



# *Reporting of exam results*

CANDIDATES RECEIVE A SCORE FOR EACH SKILL  
(READING, WRITING, LISTENING AND SPEAKING).

Our standard approach to the reporting of results across all levels guarantees that anyone can...

- understand candidates' results and assess their ability in each skill
- compare ESaT exam levels
- describe the level of language skills needed for admission requirements.



### **CERTIFICATE**

Successful candidates receive a certificate showing their overall grade, individual skills scores, CEFR level and MQF level relating to the Maltese Qualifications Framework.

### **OVERALL GRADE**

This is an aggregate of the scores achieved in the individual sections or papers (Use of English, Reading, Writing, Listening and Speaking).

### **INDIVIDUAL SCORE**

Candidates are awarded a score for each of the skills (Speaking, Reading, Writing, Listening) as well as for the Use of English section. With these overall grades and breakdown of individual skills, it is easy for institutions to specify the general level of English required in order for students to be able to participate fully in their courses, as well as indicate the requisite level for any of the language skills.

### **EXTENDED CERTIFICATION**

ESaT follows an Extended Certification policy in its assessment. Candidates that obtain a Narrow Fail are issued with a lower level certificate (e.g. a candidate that obtained a narrow fail in a B2 test, is issued a B1 certificate).

## ***The ESaT Assessment scoring scale***

<b>PASS</b> <b>Grades</b> ...	[	Grade A / 80% - 100%
		Grade B / 70% - 79%
		Grade C / 60% - 69%
<b>FAIL</b> <b>Grades</b> ...	[	Grade D / 51% - 59% Narrow Fail (see Extended Certification)
		Fail / 0% - 50%



# *Security Features*

ESAT CERTIFICATES HAVE A NUMBER OF SECURITY FEATURES TO HELP ENSURE THAT NO FRAUDULENT COPIES ARE MADE. THESE INCLUDE:

UNIQUE, TRACEABLE NUMBERS

WATERMARKS

HOLOGRAM WITH LOGO

SECURITY TONER



**ESaT CERTIFICATES DISPLAY:**

- the candidate's full name
- date of birth
- level of exam undertaken
- the corresponding CEFR and MQF/EQF level obtained
- Number of ECTS (European Credit Transfer System) credits
- date of the award
- location of test session

This is to certify that  
**John Smith**

has achieved **Grade C**  
in the **TELSa Level B2 Examination**

The National Commission for Further and Higher Education (NCFHE) deems this certificate to be at level Upper Intermediate (Level 4) of the Malta Qualifications Framework and the European Qualifications Framework for Lifelong Learning.

NCFHE licence number	MQF	Level 4
Certificate N°	ECTS	12
Date	Candidate Code	
	Centre Code	

Jason Fenech  
Director

**ESOL CERTIFICATE**  
English for Speakers of Other Languages

**ANALYSIS OF RESULTS**

Candidate: XXXXXXXX  
Examination level: MQF Level 4, CEFR Level B2  
Session: XXXXX\_20\_...  
Examination centre: XXXXXX  
Code: XXXXX

**EXAMINATION: TELSa Level B2 Examination**  
**SCORE: 63%**  
**FINAL RESULT: Grade C (Pass)**

The overall score is calculated by adding together scores obtained for each individual skill. In order to obtain a pass, candidates must achieve an overall minimum score of 60/100.

The TELSa Level B2 Examination is a general proficiency examination at MQF Level 4, ECTS 12, Level B2 of the Common European Framework of Reference (CEFR) of the Council of Europe.

	OVERALL PERFORMANCE AT MQF LEVEL 4, CEFR LEVEL B2	ACHIEVED MQF LEVEL	ACHIEVED CEFR LEVEL	DESCRIPTION OF CANDIDATE'S PERFORMANCE
PAPER 1: USE OF ENGLISH	Below minimum Standard	3	B1+	Your exam result indicates that you are at level B1+ in your Use of English. At this level, you demonstrate good control of a reasonably good range of vocabulary relating to familiar topics, although you still have some difficulty when expressing more complex thoughts or handling unfamiliar topics and situations. Notwithstanding lexical gaps, you normally manage to communicate with reasonable accuracy in familiar contexts, and you generally exercise good control of frequently used grammatical structures, notwithstanding errors which are still a common feature at this level.
READING	Good	4	B2	Your performance in this section indicates that you are at B2 level in Reading, based on the Council of Europe scale. At this level, you should be able to understand articles and reports about contemporary issues when the writer takes a particular position on a problem or expresses a particular viewpoint... can understand most short stories and popular novels.
PAPER 2: WRITING	Below minimum Standard	3	B1+	Your exam result indicates that you are at level B1+ in Writing, based on the Council of Europe scale. At this level, you should be able to write relatively clear, detailed texts on a range of topics related to your interests. You should be able to write a reasonably good essay or report, passing on information with relative clarity, and/or presenting some arguments for and/or against a particular point of view. You should also be ready to attempt basic articles, reviews and reports on topics of personal interest. Moreover, you should also be able to write personal letters, and reasonably clear letters of a more formal nature, as well as short texts which highlight the personal significance of events and experiences. Furthermore, you should also be able to write short simple summaries of selected texts pitched at B1+ or B2 level.
PAPER 3: LISTENING	Borderline	4	B2	Your performance in this paper indicates that you are at level B2 in Listening, based on the Council of Europe scale. At this level, you should be able to understand longer stretches of speech and lectures as well as follow complex lines of argument, provided the topic is reasonably familiar. Moreover, you should be able to understand most TV/radio news bulletins and current affairs programmes.
PAPER 4: SPEAKING	Good	4	B2	Your exam result indicates that you are at level B2 in your Speaking, based on the Council of Europe scale. At this level, you demonstrate a good degree of control of simple grammatical forms, whilst also attempting some complex structures. You also use appropriate vocabulary to give and exchange views on a range of familiar topics. Despite some hesitation, you are able to produce extended stretches of language, using a range of cohesive devices, and you make contributions which are relevant, with very little repetition. You are successful in initiating interaction and responding appropriately, thus maintaining and developing interaction, negotiating towards an outcome with very little support. You are, on the whole intelligible, and you generally articulate individual sounds clearly. Your word stress and sentence stress are generally accurately placed and your intonation is generally appropriate.
<b>OVERALL</b>		<b>4</b>	<b>B2</b>	

**KEY TO GRADES**

<b>Pass Grades:</b>	<b>Fail grades:</b>
Grade A 80% - 100%	Grade D 5% - 59% (Narrow Fail - MQF Level 3 - CEFR Level B1+)
Grade B 70% - 79%	Fail 0% - 50%
Grade C 60% - 69%	

**For how long are ESaT certificates valid?**

ESaT certificates have no expiration date. It is up to the institution to state how recent the achievement of the qualification should be.



# Verification of results

TO HELP MAKE VERIFICATION OF RESULTS SIMPLE AND CLEAR, A SECURE AND EASY-TO-USE ONLINE VERIFICATION SERVICE HAS BEEN DEVELOPED.

## 1 TO START USING THE SERVICE

***It is necessary to:***

- complete the registration form
- agree to the Terms of Use
- verify account registration
- log in

## 2 ONCE ACCESS TO THE SERVICE HAS BEEN GAINED

***Supply:***

- the unique Exam Candidate ID number *and*
- the unique Certificate ID

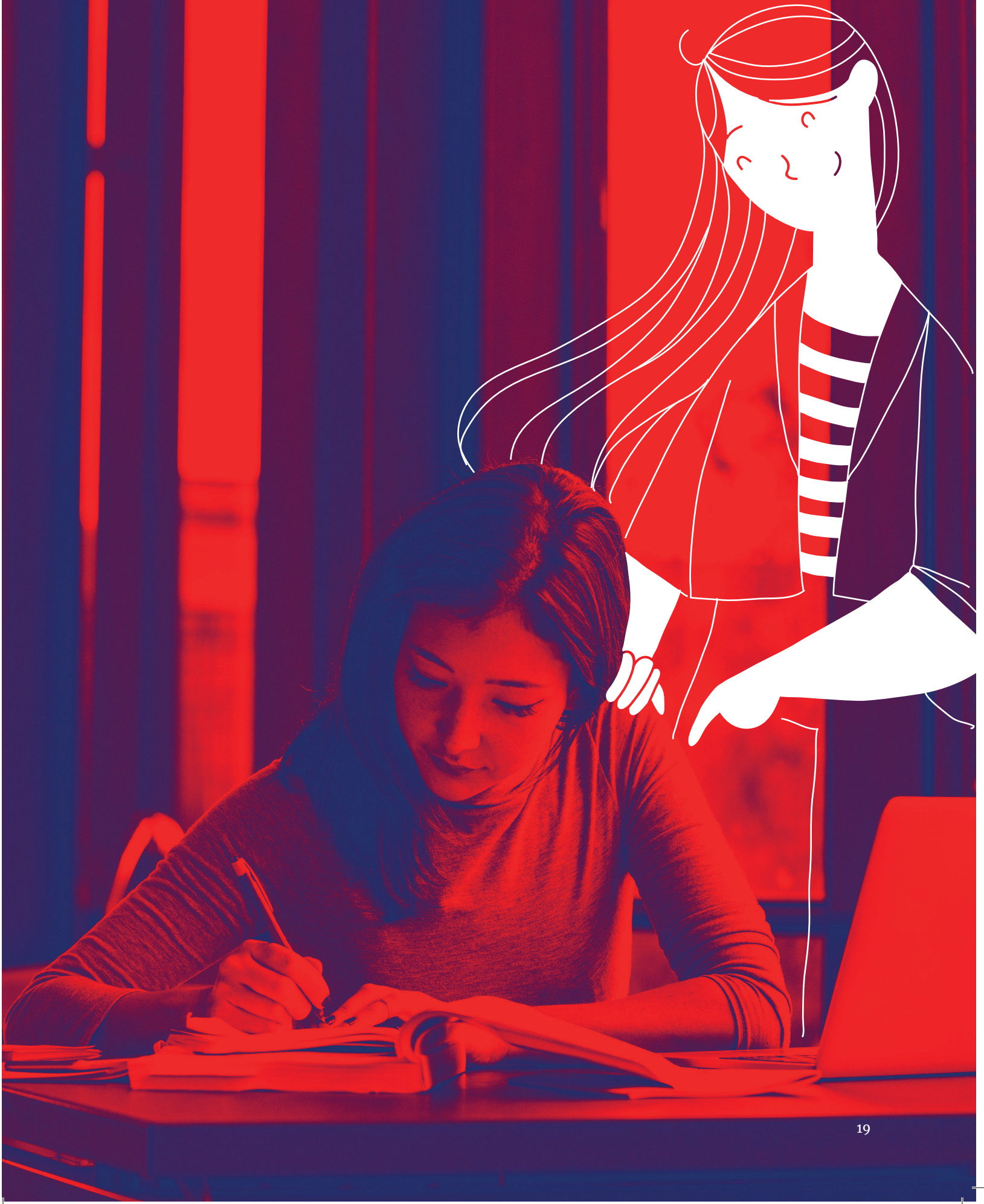
### ***Accepting ESaT Qualifications***

#### **Global Recognition Database**

When registering for our online results verification service, institutions are asked to indicate which level of ESaT qualifications the institution recognises as part of the admissions criteria.

After granting consent, the institution will be listed on the ESaT Global Recognition Database so as to notify prospective candidates that the institute accepts ESaT qualifications.







For more information about ESaT qualifications,  
please visit our website [www.esatmalta.org](http://www.esatmalta.org)

.....  
Educational Services and Testing Ltd  
The Forum – Level 2  
Constitution Str – Mosta  
MST 9041 MALTA

.....  
[info@esatmalta.org](mailto:info@esatmalta.org)

